

SHALL WE PLAY OUTSIDE?



Dear citizens of Brussels,

Brussels has plenty of qualitative sports fields and playgrounds but this has not yet been sufficiently highlighted. In the framework of the year 2017 which I have placed under the theme of Nature in the City, I wanted to put a practical and playful tool at your disposal: a poster showing some of the most beautiful spaces where children can play, imagine, let off steam and meet. A small description will give you more details about each place so that you can visit the one that most corresponds to your desires of the moment. This poster is designed to allow you to put it on the wall of the classroom or on the door of the fridge.

I hope you find this tool useful in your search for both playful and educational moments.

Céline Fremault,

Brussels Minister for the Environment and Quality of Life



Shall WE PLAY OUTSIDE?

BRUSSELS ENVIRONMENT AGENCY PLAYGROUNDS

PARC ROI BAUDOIN THE DRY RIVER



With ropes, wooden logs and a small dried-up valley, this is a free, informal playground where nature and adventure live side-by-side!

8-12 years
Square Jules Lorge, 1090 Jette
Atmosphere: nature, adventure



THE BEACH



A huge stretch of sand with water-based activities and fun cabins comprising a wonderful playground for all children who like playing with textures. A long duckboard winds around the play area. Some are in the form of deckchairs, encouraging parents to have a relaxing break in the sun... Not to be missed!

3-7 years
Rue Eugène Toussaint, 1090 Jette
Atmosphere: beach, playground, family

THE ROCK



Climbing up high towers perched between the trees, whizzing down the slides, hanging from the zip wires, discovering the strange sculptures that nest among the undergrowth and having a rest in a hammock under the tree tops... This adventure starts at The Rock. A must! There is a brasserie-type establishment opposite the playground.

7-12 years
Avenue du Laerbeek, 1090 Jette
Atmosphere: adventure, challenge

LE ROUGE-CLOÎTRE

Located at the edge of the Forêt de Soignes, Le Rouge-Cloître is the perfect place for a family outing. This magnificent former priory is a harmonious blend of nature, history, art, culture and leisure. There is a charming snack-bar serving food and drinks, and access to a public toilet.

Le Rouge-Cloître is home to 3 playgrounds:

THE PIRATE SHIP



All aboard! Keep on course, brave the storm, climb the ropes, hoist the sails, climb the mast and man the hold... welcome to all would-be pirates and rebellious mermaids!

8-12 years
Rue du Rouge-Cloître, 1160 Auderghem
Atmosphere: adventure, imagination

THE POND



Will you be able to complete the pond adventure course without putting your foot on the ground? Take up the challenge! Unless you prefer to rest by the pond for a moment and watch the frogs gurgling?

8-12 years
Rue du Rouge-Cloître, 1160 Auderghem
Atmosphere: informal, adventure

THE VILLAGE



With its zip wire, sandpit, swings, slide, small forts and many benches, this wonderful enclosed playground is perfect for younger children.

3-7 years
Rue du Rouge-Cloître, 1160 Auderghem
Atmosphere: traditional, enclosed



SNCB WALK THE MAST



Welcome to "The Mast" playground! Here, you can climb into a birds' nest at the top of the mast, swing, on your own or with others, snake along a colourful pontoon, relax and have a picnic in the shade of the trees...

3-12 years
Place de la Gare, 1150 Woluwe-Saint-Pierre
Atmosphere: joyful, family

THE REED



This small, brightly coloured playground, located along the route of the old railway line, is popular with younger children thanks to its sandpit, its water games and a games chest that children can use in good weather.

3-7 years
Rue Robert Willame, 1160 Auderghem
Atmosphere: intimate, family

PORTE DE HAL THE CASTLE



The Porte de Hal playground, located on a historic site, is a place of imagination and adventures with its gigantic castle and mediaeval village surrounded by white sand.

3-12 years
Porte de Hal, Boulevard du Midi
1060 Saint-Gilles
Atmosphere: historic
Practical: public toilet, drinking fountain

SQUARE DES URSULINES URSUL'INN



The Square des Ursulines is an important spot in Brussels' urban culture. Skateboarders, roller skaters and bikers race side-by-side, entertaining pedestrians looking for a bit of fun.

12 years and over
Square des Ursulines, 1000 Brussels
Atmosphere: urban, sporty
Practical: drinking fountain

PARC DU LIEDEKERKE THE OASIS



Perfect for those pining for sandy beaches. Located in a lively district of Brussels and surrounded by four colourful walls, this magical little park well hidden from the public has its own particular charm.

3-12 years
Rue Saint-Josse 54, 1210 Saint-Josse
Atmosphere: family, sheltered
Practical: public toilet, drinking fountain

PARC BONNEVIE THE WINDMILL



Turquoise ground, a red spiral slide, a tower that reaches into the sky, tyres swinging in the air... This spectacular playground is located in the heart of Molenbeek! Discover a colourful, dynamic and original world in a bustling park.

3-12 years
Rue Bonnevie, 1080 Molenbeek
Atmosphere: lively, spectacular

PARC DU CINQUANTAIRE THE SPIDER'S WEB



Clamber to the top of this rope climbing frame on a sandy base and observe the dome of the Great Mosque of Brussels and the historic Cinquantaire park. Unless you prefer to sit on the dragon?

3-7 years
Parc du Cinquantaire
Avenue de la Renaissance, 1000 Brussels
Atmosphere: sand, traditional
Practical: public toilet

PARC GEORGES HENRI GULLIVER



Originality, diversity and adventure come together in this spectacular and unique playground. Undoubtedly one of the most beautiful in Brussels. Be careful, the giant is keeping watch in the middle of the sand!

3-12 years
Avenue Georges Henri
1200 Woluwe-Saint-Lambert
Atmosphere: adventure, imagination
Practical: public toilet, drinking fountain

PARC SENY THE MAGIC TREE



The "Magic tree" playground blends perfectly with the landscape and is popular with young and old alike. A hut perched at the top of a hill-ock, white sand, a fast slide, and a bit further swings and small pathways leading you into an imaginary land.

3-7 years
Rue Charles Lemaire, 1160 Auderghem
Atmosphere: magical, landscape, family

PARC SCHEUTBOS A MINI WILD WEST



Very Western-style decor in this new playground in a beautiful park. Young cowboys and cowgirls will feel right at home here!

3-7 years
Avenue Maurice Van Hemelrijk
1080 Molenbeek
Atmosphere: themed, family

ESPACE GAUCHERET THE FOUNTAIN



The Espace Gaucheret is a multi-purpose urban park. Its fun, contemporary design makes it ideal for a number of different activities, including football, basketball, pétanque, roller-skating and a playground. Its playfountain, the only one in Brussels, attracts many children as soon as the warm weather returns.

All ages
Rue Gaucheret, 1030 Schaerbeek
Atmosphere: urban, contemporary

PARC TENBOSCH THE PEARL



A real haven of peace, the Parc Tenbosch has some wonderful surprises in store along the path that surrounds it. The small playground in the centre of the park seems to have been placed there like a pearl amidst the vegetation. Succumb to the charm.

3-7 years
Square Henri Michaux, 1050 Ixelles
Atmosphere: intimate, poetic

COMMUNAL PLAYGROUNDS

LE PARC MALOU THE ENCHANTED TERRACE



Do you fancy sitting on the terrace with a glass in your hand, watching your children having fun in a wonderful wooded, enclosed playground? If you do, head to the Parc Malou! Its family-friendly refreshment area with a view of the large playground is perfect for relaxing with your children and enjoying an ice cream in good weather.

1-12 years
Chaussée de Stockel 65-67
1200 Woluwe-Saint-Lambert
Atmosphere: family

ÉLÉONORE THE TREEHOUSE



The treehouse at the crossroads of two streets sits among the treetops. Small climbers, budding tumblers and pretty flying fairies, tell your parents to close their eyes and not be afraid.

3-8 years
Avenue Éléonore 79,
1150 Woluwe-Saint-Pierre
Atmosphere: intimate, family, acrobatic

DAMES BLANCHES THIS IS NOT AN ICE CREAM



... but a wonderful spacious playground with activities for all ages. The youngest can have fun in the sand pit with the swings and small slides. Older children can challenge themselves with games of skill, monkey bars and a sports pitch. Adults can enjoy the health trail and pétanque ground or relax on a bench.

All ages
Avenue Tir aux Pigeons 115,
1150 Woluwe-Saint-Pierre
Atmosphere: spacious, pleasant

RENIER CHALON LET'S GO!



A large, pleasant playground offering a multitude of activities. It has two sand pits, swings, climbing frames, slides, shady areas, an area reserved for younger children... there are facilities for basketball, mini-football and table-tennis. Kids love it, parents too!

All ages
Rue Renier Chalou 17, 1050 Ixelles
Atmosphere: sand, sport
Practical: public toilet, accessible to people with reduced mobility; adapted games

ZOOS

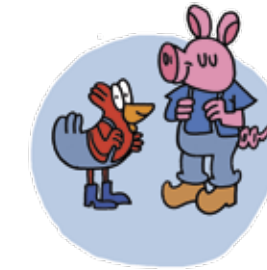
PARC DE LA SAUVAGÈRE

Enjoy a walk around this small park with Georges the donkey as your guide. Chickens, pheasants, rabbits, sheep and goats, peacocks, a lake with swans... this is the countryside in the heart of the city!

www.uccle.be/administration/vert/parcs

PARC DE ROODEBEEK

Set off on a small journey among the aviaires of the Parc de Roodebeek, where some twenty birds from different species await you. Rabbits and guinea pigs cohabit happily further along. This mini-farm will delight younger children.



EDUCATIONAL FARMS

NOS PILIFS FARM

Nos Pilifs farm covers more than five hectares of woodland, meadows, enclosures, ponds and paths. Visit the animals all year round: pigs, chickens, donkeys, horses, sheep, cows, goats and rabbits. The farm offers baskets of organic vegetables, products of the farm, and a small café. A wonderful space maintained by people with disabilities; a project full of respect.

www.fermenospilifs.be

PARC MAXIMILIEN FARM

Parc Maximilien farm has an unusual, rustic atmosphere in the city centre. Few people suspect the existence of this rural corner where large numbers of animals live together in harmony. The farm is used for education and environmental awareness. It is also a social farm which helps to create local cohesion.

www.lafemmeduparcmaximilien.be

UCCLE FARM

Uccle farm is a small farming operation managed by the non-profit organisation Tournesol. Located in the exceptional setting of the Parc Fond'Roy, you will find orchards, meadows, vegetable gardens, woods and marshland. The farm is open to families on some Sunday mornings and Wednesday afternoons.

www.tournesol-zonnebloem.be

JETTE CHILDREN'S FARM

Jette children's farm was created in the 1980s in an attractive small Brabant farmhouse. It is located on the edge of the Parc Roi Baudouin. It hosts courses and activities on Wednesday mornings for children aged 4 to 12. It is a magical place where young city-dwellers can learn about life on the farm. To see and hear the animals, consult their website; you won't be disappointed.

www.fermepourenfantsjette.be

Brussels has more than 320 playgrounds and sportsgrounds. Consult your commune's website to find out about playgrounds nearby. For more information, you can also go to:

www.gardens.brussels
www.environnement.brussels/plainesdejeux

Attention: some playgrounds have opening hours. Check before visiting.

Poster created with consent of the concerned municipalities.

 **brussels environment** .brussels

 2017 NATURE EN VILLE

 2017 NATUUR IN DE STAD